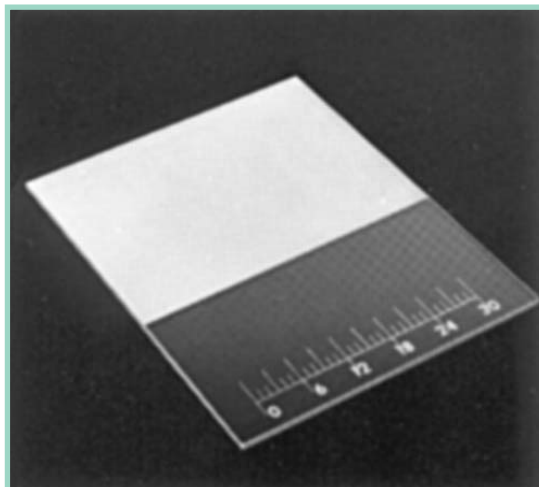
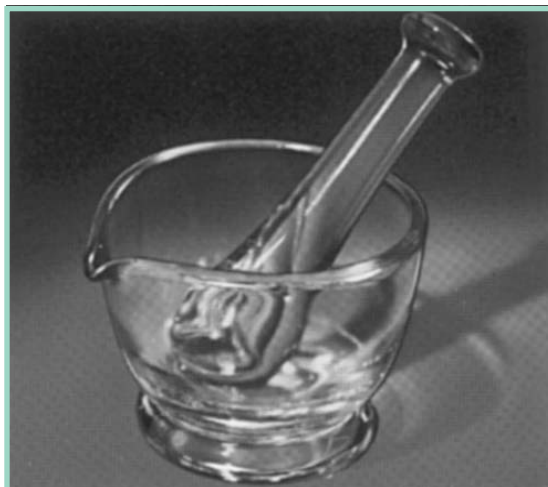
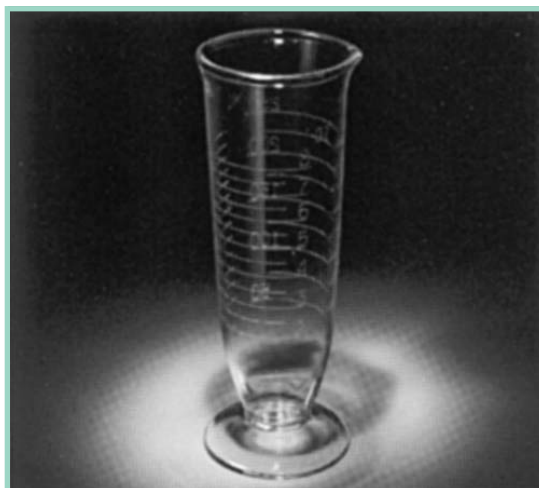
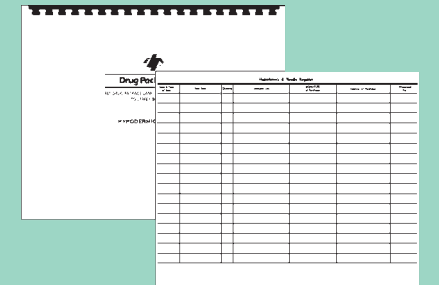
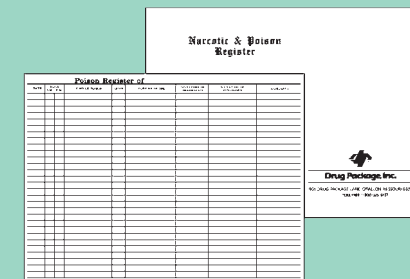
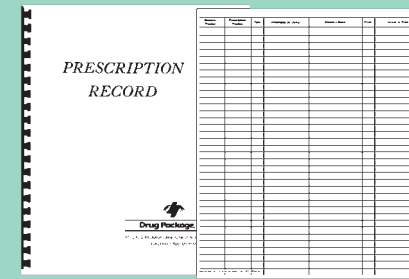
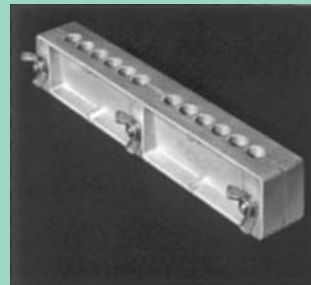
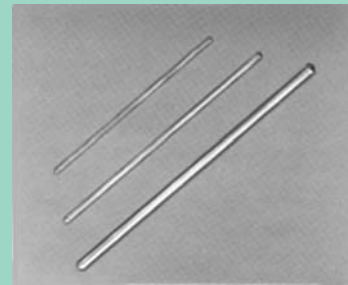


Pharmacy Supplies



from Drug Package, Inc.

A Full Line of Pharmacy Supplies In Stock For Immediate Shipment



MORTARS AND PESTLES, GLASS
Smooth rounded work surface, free of ribs or grooves. Mortar matches curvature of pestle head.

| Mortars | | Pestles | |
|-------------|--------|-------------|--------|
| Catalog No. | Sizes | Catalog No. | Sizes |
| PE-GM2 | 2 oz. | PE-GP2 | 2 oz. |
| PE-GM4 | 4 oz. | PE-GP4 | 4 oz. |
| PE-GM8 | 8 oz. | PE-GP8 | 8 oz. |
| PE-GM16 | 16 oz. | PE-GP16 | 16 oz. |

MORTARS AND PESTLES, CERAMIC

Pestles have glazed handles. Mortars have glazed outer surfaces and lips. Mortars and Pestles have abradant working surfaces.

| Mortars | | Pestles | |
|-------------|--------|-------------|--------|
| Catalog No. | Sizes | Catalog No. | Sizes |
| PE-CM2 | 2 oz. | PE-CP75 | 75 mm |
| PE-CM5 | 5 oz. | PE-CP105 | 105 mm |
| PE-CM8 | 10 oz. | PE-CP135 | 135 mm |
| PE-CM16 | 14 oz. | PE-CP175 | 175 mm |

GLASS STIRRING RODS

Sturdy glass rods with rounded, polished ends.

| Catalog No. | Sizes |
|-------------|-------|
| PE-STR1 | 8" |
| PE-STR2 | 10" |
| PE-STR3 | 12" |

SUPPOSITORY MOLD

Two-piece, hand-finished, aluminum alloy mold, with threaded brass posts and wing nuts. Forms up to twelve individual suppositories.

| Catalog No. |
|-------------|
| PE-SM1 |

PRESCRIPTION RECORD BOOK NO. 100

Record book No. 100 contains 100 pages with spaces for recording 3,500 prescriptions. The cover is hard-pressed, light blue cardboard printed with black letters and held secure with plastic spiral binding.

| Catalog No. |
|-------------|
| RXRB-100 |

NARCOTIC AND POISON REGISTER

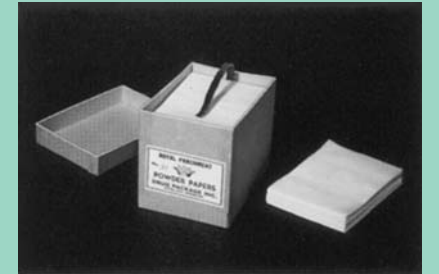
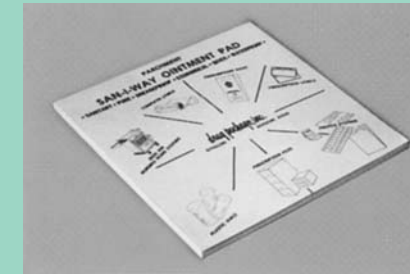
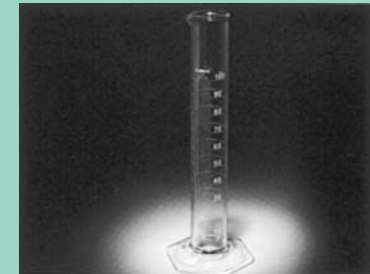
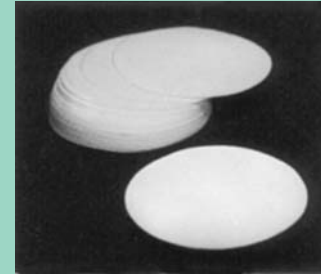
The Drug Package Combination Narcotic and Poison Register, bound in a flexible cover accommodates 812 narcotic entries and 203 poison entries.

| Catalog No. |
|-------------|
| RXRB-NP |

HYPODERMIC AND NEEDLE REGISTER

The Hypodermic and Needle Register contains 25 pages, room for 850 entries. Its 32 lb., green tint ledger pages are printed in blue ink and bound in a blue protective cover.

| Catalog No. |
|-------------|
| RXRB-HN |



FUNNELS, RIBBED PRESSED GLASS

Well annealed. Ribbed for venting. Stems ground at 60 degree angle to accelerate filtration.

| Catalog No. | Sizes |
|-------------|--------|
| PE-GF2 | 2 oz. |
| PE-GF4 | 4 oz. |
| PE-GF8 | 8 oz. |
| PE-GF16 | 16 oz. |
| PE-GF32 | 32 oz. |

WHITE ROUNDED FILTER PAPER

Medium textured, all-purpose paper for pharmacy use. Low ash content. Suitable for all analytical purposes except where acid-washed paper is required.

| Catalog No. | Sizes |
|-------------|-------------|
| PE-FP4 | 100/PKG 4" |
| PE-FP6 | 100/PKG 6" |
| PE-FP10 | 100/PKG 10" |
| PE-FP13 | 100/PKG 13" |

GRADUATES, PLASTIC

Non-breakable, clear-as-glass plastic gives long life and great value.

| Cylindrical | | Conical | |
|-------------|----------|-------------|--------|
| Catalog No. | Sizes | Catalog No. | Sizes |
| PE-PG1 | 25 ml. | PE-PG7 | 2 oz. |
| PE-PG2 | 50 ml. | PE-PG8 | 4 oz. |
| PE-PG3 | 100 ml. | PE-PG9 | 8 oz. |
| PE-PG4 | 250 ml. | PE-PG10 | 16 oz. |
| PE-PG5 | 500 ml. | | |
| PE-PG6 | 1000 ml. | | |

SPATULAS

STRAIGHT TEMPERED STEEL BLADES with rounded ends and riveted, patent cocoa handles

| Catalog No. | Sizes |
|-------------|----------|
| PE-SS1 | 4" Blade |
| PE-SS2 | 6" Blade |

HARD RUBBER BLADE and handle.

| Catalog No. | Sizes |
|-------------|----------|
| PE-SR1 | 6" Blade |
| PE-SR2 | 4" Blade |

TAPERED BLADE SPATULA feature stainless steel blade with light brown, hardwood handle.

| Catalog No. | Sizes |
|-------------|--------------|
| PE-TS2 | 4 1/2" Blade |

GRADUATES, GLASS

"Pyrex" quality meets government standards for solubility. Graduation points individually hand calibrated; lines and numerals hand engraved.

| Cylindrical | | Conical | |
|-------------|----------|-------------|------------------|
| Catalog No. | Sizes | Catalog No. | Sizes |
| PE-GG1 | 60 min. | PE-GG7 | 25 ml. (8 dr.) |
| PE-GG2 | 5 ml. | PE-GG8 | 50 ml. (2 oz.) |
| PE-GG3 | 120 min. | PE-GG9 | 100 ml. (4 oz.) |
| PE-GG4 | 10 ml. | PE-GG10 | 250 ml. (8 oz.) |
| PE-GG5 | 4 dr. | PE-GG11 | 500 ml. (16 oz.) |
| | | PE-GG12 | 32 oz. |

SAN-I-WAY OINTMENT PADS

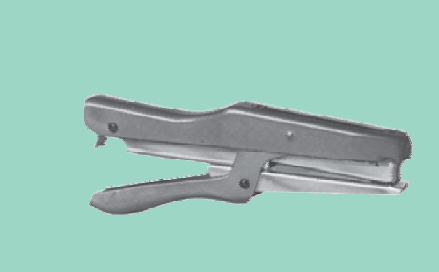
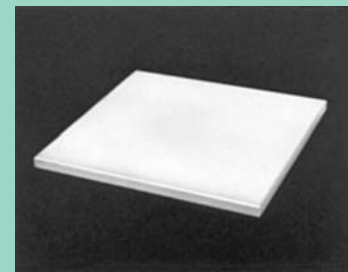
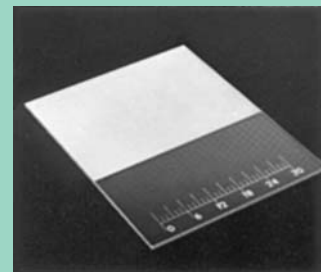
Genuine 35 lb., pure vegetable parchment paper, bound on two edges. Sheets are sanitary, waterproof, greaseproof and economical. One pad contains 100 sheets.

| Catalog No. | Sizes |
|-------------|---------|
| PE-OP1 | 12 X 12 |

POWDER PAPERS

Papers are blank, not printed. Carton features cardboard paper cover and handy pull ribbon.

| Catalog No. | Sizes | |
|-------------|---------------|--------|
| 13# Bond | 27# Parchment | |
| PE-PB16 | PE-PP16 | No. 16 |
| PE-PB34 | PE-PP34 | No. 34 |
| PE-PB40 | PE-PP40 | No. 40 |
| PE-PB61 | PE-PP61 | No. 61 |
| PE-PB72 | PE-PP72 | No. 72 |



THE HOOK, KNIFE-SPATULA

The Hook knife-spatula is a handy, time saving tool used in the pharmacy.

| Catalog No. |
|-------------|
| PE-THEHOOK |

GLASS PILL TILES

Perfectly level; underside graduated up to 30 units.

| Catalog No. | Size |
|-------------|-----------|
| PE-PT1 | 10" x 12" |

GLASS OINTMENT SLAB

Bottom roughened to minimize movement while in use.

| Catalog No. | Size |
|-------------|------------------|
| PE-OS1 | 12" x 12" x 3/4" |

LAMPS, SPIRIT GLASS

Alcohol lamps with ground glass covers, individually boxed. Replacement wicks available.

| Catalog No. | Size |
|-------------|-------|
| PE-SL | 4 oz. |

"C" STAMPS

The "C" Stamp for controlled substances is available either as a manual stamp for use with an ink pad, or in a self-inking model.

| Catalog No. | Manual |
|-------------|-------------|
| PE-CSM | Manual |
| PE-CSS1 | Self-Inking |

NUMBERING MACHINES

Bates Style A, Bates Style E. Multiple Movement, Consecutive, Duplicate, Repeat and Triplicate. Six Wheels, Self Inking Only. BATES Multiple CD (used for "carbon work") available on special order.

| Catalog No. | Style A |
|-------------|---------|
| PE-6A | Style A |
| PE-6E | Style E |

SELF INKING DATER

Replacement ink pads available.

| Catalog No. |
|-------------|
| PE-121-1/2 |

BOSTITCH P-3 PLIER TYPE STAPLER

BOSTITCH SP 19-1/4" STAPLES
Staples supplied 5,500 per box.

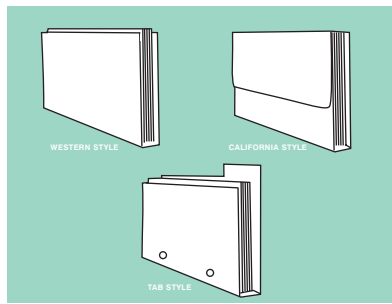
| Catalog No. | Stapler |
|-------------|---------|
| PE-P3 | Stapler |
| PE-SP-19 | Staples |



HEAVY DUTY FILING CABINET

8 Drawer File
Steel-welded, white enamel finish.
Holds approximately 10,000 prescriptions per drawer.

| | | | |
|-------------|------------------------|---------------|--|
| Catalog No. | | | |
| FC-110171 | 15"W x 52"H x 28 1/2"D | 8 Drawer File | |



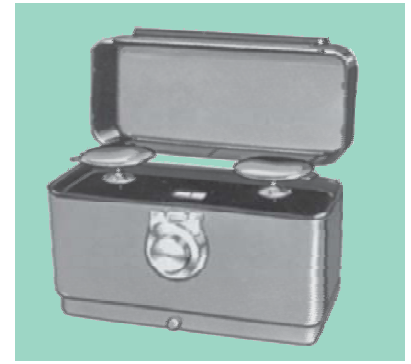
PRESCRIPTION FILE FOLDERS

Three Styles in Buff color. Each Hold 100 Prescriptions.
California Style Folders Wrap completely around prescriptions.

Western Style Folders Form a "U" shaped pocket to keep prescriptions in place.

Tab Style Folders Raised tab. Hold prescriptions loose or use specially drilled holes to secure with twine or aluminum posts

| | | |
|-------------|---------|--------------------------|
| Catalog No. | | |
| FC-CFF | 100/PKG | California Style |
| FC-WFF | 100/PKG | Western Style |
| FC-TFF | 100/PKG | Tab Style |
| FC-ASP | 100/PKG | Screw Post for Tab Style |



TORSION'S MODEL DRX PRESCRIPTION BALANCE

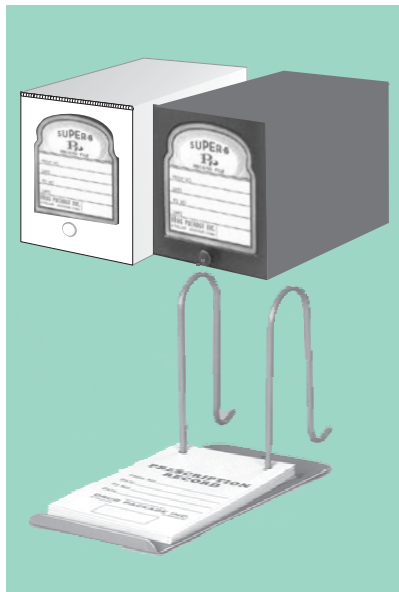
The Quality Prescription Balance. Just "Dial In" Weights from .01 to 1 Gram or 1/8 Grain to 15 Grains.

DRX SPECIFICATIONS

Bureau of Standards Rating: Class A
Capacity: 120 grams (4 oz.)
Sensitivity: 1/32 grain (2 mg.)
Sensitivity Reciprocal: 0.1 grain (6.5 mg.)
Pans: 3-1/8" dia., Polished Stainless Steel
Case: Metal with special scratch resistant hard gray finish especially resistant to chemical corrosion, black glass top plate and glass in hinged cover
Non-Binding Leveling Screws.

Overall dimensions: 11-1/2" x 6" x 7-5/8"

| | |
|-------------|---------------|
| Catalog No. | |
| PE-DRX-3 | Drx-3 Balance |
| PE-DRXC | Balance Cover |



PRESCRIPTION FILE BOXES

INNER DOUBLE PRONG BOXES

1 Heavy duty metal 1 Wire prongs spaced 2 3/4" apart
FB-500 Quickway (Black) 5" wide x 6" high x 9 1/4" apart
Heavy, reinforced board with sturdy fabric hinge.
FB-111-W Drug Pak (White) 5" wide x 6" high x 9 3/8" deep

| | |
|-------------|--------------------|
| Catalog No. | |
| FB-500 | Quickway (Black) |
| FB-111-W | Drug Pak(White) |
| FB-IDP | Inner Double Prong |



ALL PLASTIC PADDED MAILERS

AirJackets are unique, light-weight protective padded mailers made from a durable, moisture resistant, multi-layer blend of polyethylene film.

| | | | | |
|---------------------------------------|-------------|---------------|--------|--|
| Catalog No. SIZES (I.D.) SIZES (O.D.) | | | | |
| AJ-000 | 4" x 7.75" | 4.75" x 7.75" | 500/CS | |
| AJ-00 | 5" x 9.75" | 5.75" x 9.75" | 250/CS | |
| AJ-0 | 6" x 9.75" | 6.75" x 9.75" | 250/CS | |
| AJ-1 | 7.25" x 12" | 8" x 12" | 100/CS | |
| AJ-2 | 8.5" x 12" | 9.25" x 12" | 100/CS | |
| AJ-3 | 8.5" x 14" | 9.25" x 14" | 100/CS | |
| AJ-4 | 9.5" x 14" | 10.25" x 14" | 100/CS | |
| AJ-5 | 10.5" x 16" | 11.25" x 16" | 100/CS | |
| AJ-6 | 12.5" x 19" | 13.25" x 19" | 50/CS | |
| AJ-7 | 14.5" x 20" | 15.25" x 20" | 50/CS | |



WEIGHTS

Combination Sets
No. TC-105 - Metric: 50 grams - 10 mg.
Apothecary: 4 drams - 1/2 grain
Set furnished in hinged-cover box with stainless steel forceps

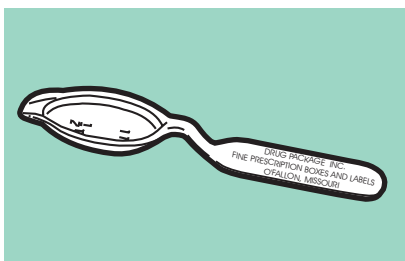
| | |
|-------------|-----------------|
| Catalog No. | |
| PE-TC-105 | Combination Set |
| PE-TM-130 | Metric Weights |



SCOUT™ PRO PORTABLE

Large LCD display with simple two-button operation - no training
Weigh below hook for density/specific gravity measurements
Optional RS232 or USB interface with integrated cable
Large stainless steel weighing surface

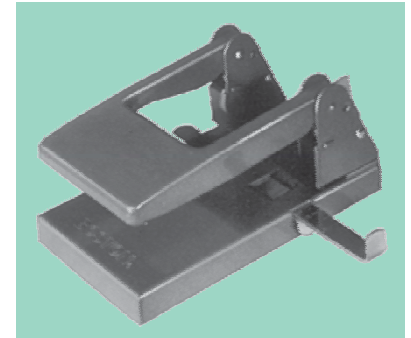
| | |
|-------------|--|
| Catalog No. | |
| SC-2020 | |



IMPRINTED SAF-T-SPOON

White, pink, blue and green spoons are clearly marked to measure 1/2 and 1 teaspoon doses. Each plastic Saf-T-Spoon features your pharmacy name and phone number imprinted on two or three lines in black or metallic red, blue, green or gold ink. Not available without imprint.

| | |
|-------------|--|
| Catalog No. | |
| CMA-ST5 | |



TWO HOLE PUNCH

2-3/4" Center Holes.
All Metal with Sliding Rule Guide.

| | |
|-------------|--|
| Catalog No. | |
| PE-74050 | |